



networks@work

Quick Install Guide

CompeX 24-Port Fast Ethernet Switch

SDS1224 2a



Table of Contents

1: Introduction.....	1
 Packaging Content.....	1
2: Network Applications	2
 Example A: Small Workgroup Application	2
 Example B: Department Bridge Application	2
3: Let’s Get Going-Hardware Setup	3
4: Panel Views and Descriptions.....	5
5: LED Indicators Description.....	6
6: Technical Specifications	7
WARRANTY REGISTRATION CARD	10

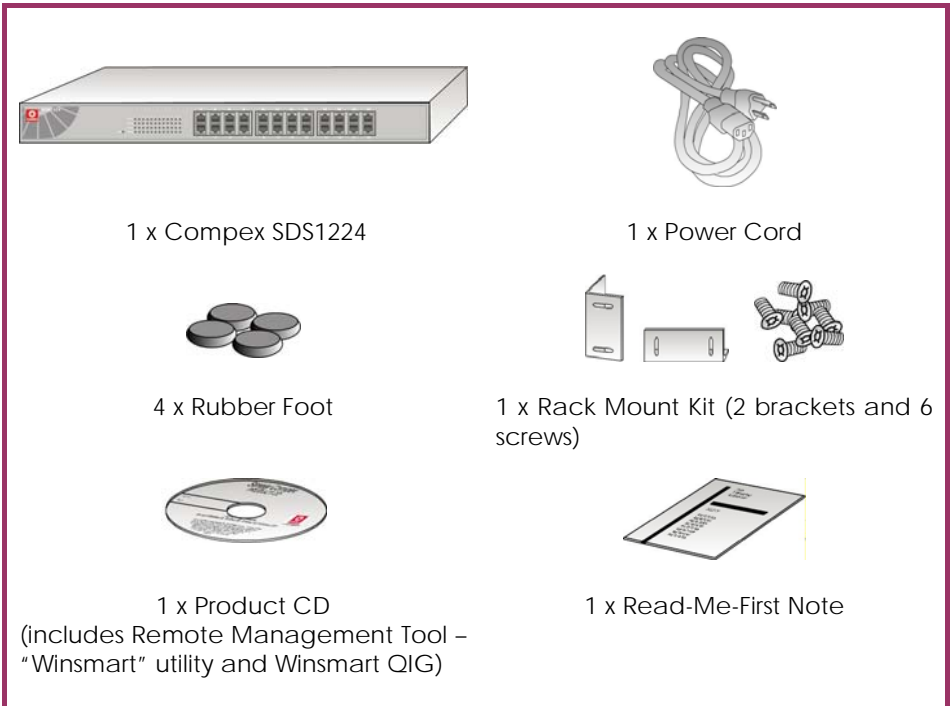
1: Introduction

Complex SDS1224 is a 24-port 10/100 Base-TX switch used for high-performance switched workgroup networks. This switch is a store-and-forward device that offers low latency for high speed networking. This feature allows the switch to auto-learn and store address on its 8K-entry MAC address table.

Complex SDS1224 is suitable for SME (small, medium enterprise) business workgroup, department or backbone computing environments.

Packaging Content

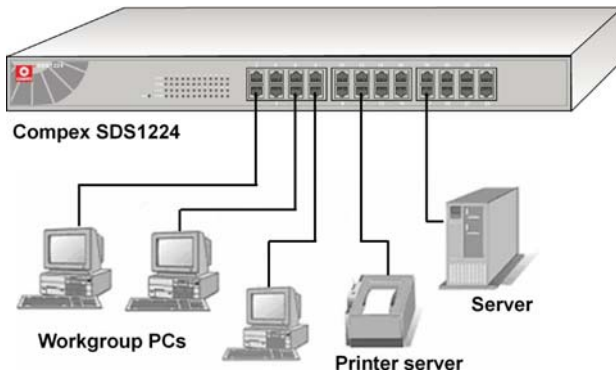
Actual product appearance may slightly differ depending on the hardware version.



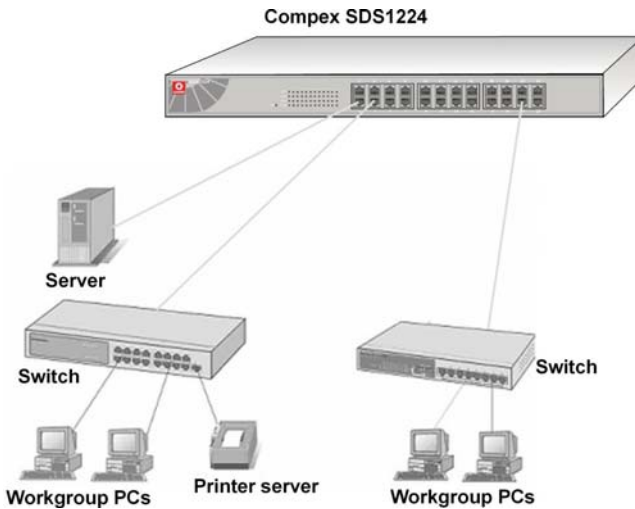
2: Network Applications

Only a few simple steps are required to set up the Compex SDS1224 to illustrate how the switch is used for small workgroup and enterprise networks.

Example A: Small Workgroup Application



Example B: Department Bridge Application



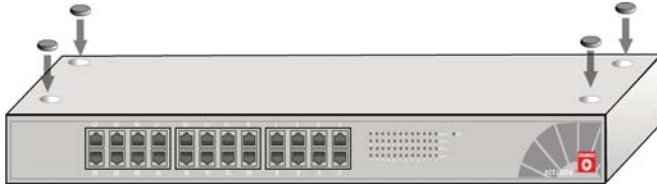
3: Let's Get Going-Hardware Setup

Before setting up the Compex SDS1224, please take note of the following after you have unpacked the unit:

- Ensure that there is sufficient space for heat ventilation when placing it near to a power outlet.
- Ensure that the mounting surface to place Compex SDS1224 should be free of grease and dust.
- Ensure that there is enough spacing around the unit to allow attachment of network cables.

Step 1

Attach the rubber feet on the bottom of the metal chassis. These rubber feet prevent the switch from shock and vibration.



Step 2

Since Compex SDS1224 comes with a rack mount kit, position one bracket to align with the holes on one side of the switch and secure it with the smaller bracket screws.



Step 3

Attach the remaining bracket to the other side of the switch.

Step 4

After both the mounting brackets are attached, position the switch in the rack by lining up the holes in the brackets with the appropriate holes on the rack.

Step 5

Secure the switch to the rack with a screwdriver and the rack-mounting screws.

Step 6

Connect the power cord to the power socket on the rear panel of the switch. The other side of power cord connects to the power outlet.

Step 7

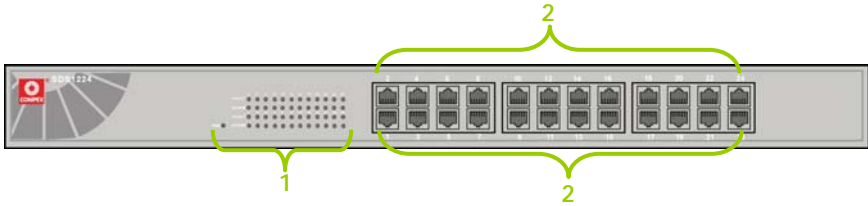
Use a RJ45 Ethernet cable and connect it to any of the ports. (according to the examples in the Network Application).

Step 8

The hardware setup is done. You may power on the device now. Check the power indicator on the front panel to see if power is properly supplied.

4: Panel Views and Descriptions

Front View of Complex SDS1224

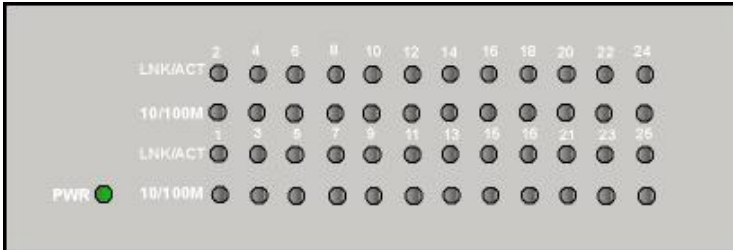


Back View of Complex SDS1224



	Indicator	Description
1	LED Indicators	Used for real-time information of system operation status. For more details, refer to LED Indicators Description.
2	24 RJ45 10/100 Mbps Ports (Auto MDI/MDIX)	Use UTP/STP network cables to connect <ul style="list-style-type: none"> ◆ 10 Base-T or 100 Base-TX ◆ Auto negotiable feature (Take note that MDI means connecting to another hub or switch while MDIX means connecting to a workstation or PC. So Auto MDI/MDIX means that you can connect to another switch or workstation without changing non-crossover or crossover cabling).
3	Power Socket	Power input at the range of 100-240V AC, 50-60Hz.

5: LED Indicators Description



LED Indicator	Status	Description
PWR	Steady Green	Power is supplied to the unit.
	Off	No power is supplied to the unit.
LNK/ACT	Steady Green	The port is connecting with the device.
	Blinks	The port is receiving or transmitting data.
	Off	No device is attached.
10/100M	Steady Green	The port is operating at the speed of 100Mbps.
LNK/ACT means Link/Activity.		

For more details on how to activate VLANs, Trunking and Priority Ports, please refer to the "Winsmart" QIG on the Product CD.

This document may become superseded in which case you may find its latest version at <http://www.complex.com.sg>

6: Technical Specifications

EMI & Safety	<ul style="list-style-type: none"> ◆ FCC Part 15 Class A ◆ CE Mark ◆ UL & cUL ◆ CE/EN60950
Standards supported	<p>Complies with</p> <ul style="list-style-type: none"> ◆ IEEE 802.3: 10Base-T Ethernet ◆ IEEE 802.3u: 100Base-Tx Fast Ethernet ◆ IEEE 802.3x: Flow Control and Back-Pressure
Technology	Store and Forward Switching Architecture
LED Indicators	<ul style="list-style-type: none"> ◆ Power ◆ Link/Activity ◆ 10/100M
Network Media	<ul style="list-style-type: none"> ◆ 10Base-T: <ul style="list-style-type: none"> ○ UTP/STP Category 3, 4, 5. ○ EIA/TIA-568 100-ohm. ○ Maximum length: 100 meter ◆ 100Base-TX: <ul style="list-style-type: none"> ○ UTP/STP Category 5. ○ EIA/TIA-568 100-ohm ○ Maximum length: 100 meter
Protocol	CSMA/CD
Memory Buffer	1.25Mbits
MAC Address	8K MAC address table
Data Transfer Rate Half-Duplex: Full-Duplex:	<p>10/100Mbps</p> <p>20/200Mbps</p>
Power Consumption	Maximum of 13.2 watts
Power Supply	100-240V AC, 50-60Hz

Dimension	440mm x 200mm x 44mm (L x W x H)
Environment Requirements	Operating Temperature: 0°C to 50°C Storage Temperature: -20°C to 70°C Operating Humidity: 5% to 90% (Non-condensing)

Disclaimer: **Compex, Inc.** provides this guide without warranty of any kind, either expressed or implied, including but not limited to the implied warranties of merchantability and fitness for a particular purpose. **Compex, Inc.** may make improvements and/or changes to the product and/or specifications of the product described in this guide, without prior notice. **Compex, Inc.** will not be liable for any technical inaccuracies or typographical errors found in this guide. Changes are periodically made to the information contained herein and will be incorporated into later versions of the guide. The information contained is subject to change without prior notice.

Trademark Information: **Compex**[®], **ReadyLINK**[®] and **MicroHub**[®] are registered trademarks of **Compex, Inc.** **Microsoft Windows** and the **Windows logo** are the trademarks of **Microsoft Corp.** **NetWare** is the registered trademark of **Novell Inc.** All other brand and product names are trademarks or registered trademarks of their respective owners.

Notice: Copyright © 2005 by **Compex, Inc.** All rights reserved. Reproduction, adaptation, or translation without prior permission of **Compex, Inc.** is prohibited, except as allowed under the copyright laws.

Manual Revision by Ann

Manual Number: **M-0513-V1.2C** Version 1.2, October 2005

FCC NOTICE: This device has been tested and found to comply with the limits for a **Class A** digital device, pursuant to **Part 15 of the FCC Rules**. These limits are designed to provide reasonable protection against harmful interference in a residential installation. This device generates, uses and can radiate radio frequency energy and, if not installed and used in accordance with the instructions, may cause harmful interference to radio communications. However, there is no guarantee that interference will not occur in a particular installation. If this device does cause harmful interference to radio or television reception, the user is encouraged to try to correct the interference by one or more of the following measures:

- Reorient or relocate the receiving antenna.
- Increase the separation between the computer and receiver.
- Connect the computer into an outlet on a circuit different from that to which the receiver is connected.
- Consult the dealer or an experienced radio/TV technician for help.

Caution: Any changes or modifications not expressly approved by the grantee of this device could void the user's authority to operate the equipment.

FCC Compliance Statement: This device complies with Part 15 of the FCC Rules. Operation is subject to the following two conditions:

- (1) This device may not cause harmful interference, and
- (2) This device must accept any interference received, including interference that may cause undesired operation.

ICES 003 Statement

This Class A digital apparatus complies with Canadian ICES-003

DECLARATION OF CONFORMITY: *Compex, Inc. declares that the product:*

Product Name: Compex 24-Port 10/100 Mbps Fast Ethernet Switch

Model No.: SDS1224 *conforms to the following Product Standards:*

Radiated and Conducted Emission Standards: EN55022, FCC Part 15B Class A

Immunity Standards: EN55024

Safety Conformance: EN61000-3-2, EN61000-3-3.

Therefore, this product is in conformity with the following regional standards: FCC Class A — following the provisions of FCC Part 15 directive; CE Mark — following the provisions of the EC directive.

Manufacturer's Name: Compex Systems Pte Ltd

Address: 135 Joo Seng Road, PM Industrial Building, #08-01, Singapore 368363

WARRANTY REGISTRATION CARD

Register via the Internet at <http://www.cpx.com>
or <http://www.compex.com.sg>

[M-0088-V2.4C]



To activate the warranty, please complete this card and return to Compex within ninety (90) days from the date of purchase.

Please e-mail this warranty card to support@compex.com.sg.

Product:	Purchase Date:	Model:	Serial No:
Name:		E-mail:	
Company:			
Address:			
Postal/Zip Code:		Country:	
Phone: ()			

Note:

For purchases within U.S.A and Canada, please fax to Compex, Inc. at (714) 482 0332

For purchases outside U.S.A and Canada, please fax to Compex Systems Pte Ltd at (65) 6280-9947

Manual Number:
M-0513-V1.2C
Version 1.2
October 2005

